

Seat No.

M	2	1	5	1	3	8	0	0	11
---	---	---	---	---	---	---	---	---	----

0502

VSA (English Medium)

Paper No. II

Mathematics

Time : 1 P.M. to 2 P.M.

Pages : 16

Total Marks : 100

Instructions :—

- (1) This question paper contains **50** questions carrying **2** marks each.
- (2) *All* questions are compulsory.
- (3) A separate answer-sheet is provided. Every question has four alternatives numbered 1, 2, 3, 4. Out of these only one choice of answer is correct. This correct alternative number should be written in the block provided in the answer-sheet, next to the corresponding question number, e.g.

4

.
- (4) The correct alternative should be written in English number only. Answers in any other language will not be considered.
- (5) As far as possible avoid cancellations and overwriting. Answers written in this way will not be considered.
- (6) Answers should be written in blue or black ink pen or ball point pen. Answer written in pencil or red or any other coloured ink will not be checked.
- (7) While correcting the answer, cancel the wrong answer number by drawing three lines across it as shown

3

. The corrected answer number should be written next to the cancelled block, to look like

3

 2.
- (8) The correction can be done only **once** for each question.
- (9) In one subject maximum **five** corrections will be considered. More than **five** corrections will not be given marks.
- (10) Space for rough work has been provided in the question paper.

1. ✓ How will you write 13,009 in words ?

- (1) ✓ Thirteen thousand and nine
- (2) One thousand three hundred and nine
- (3) Thirteen hundred and nine
- (4) One hundred thirty thousand and nine

2. ✓ $317 + 2002 = \dots\dots? \dots\dots$

- (1) 2329
- (2) 2312
- ~~(3) 2319~~
- (4) 2315

3. In which of the following numbers, the place value of the digit 5 will be maximum ?

- (1) 7250
- (2) 7586
- (3) 7805
- ✓ (4) 5240

4. ✓ $3929 \square 3920$, which correct sign will be used in the box ?

- (1) >
- (2) <
- (3) \surd
- (4) =

5. How will you write 'Three thousand six hundred and thirty nine' in numbers ?

(1) 3369

~~(2) 3639~~

(3) 3649

(4) 3693

6. Which of the improper fraction is the smallest in $\frac{7}{11}, \frac{8}{11}, \frac{5}{11}, \frac{10}{11}$?

~~(1) $\frac{5}{11}$~~

(2) $\frac{7}{11}$

(3) $\frac{10}{11}$

(4) $\frac{8}{11}$

7. How will you read the decimal fraction 0.059 ?

~~(1) Zero point zero five nine~~

(2) Zero integer fifty nine hundredth

(3) Zero point fifty nine

(4) Point zero zero fifty nine

8. The sum of two sides of a square is 10 cm, so what will be its perimeter ?

(1) 5 cm

~~(2) 20 cm~~

~~(3) 40 cm~~

(4) 100 cm

9. $\frac{1}{100}$ litre =?.....

100 ml
100 00

(1) 10 ml

(2) 100 ml

(3) 1000 ml

(4) 1 ml

10. 5432 milligrams is equal to how many grams ?

(1) 0.5432

(2) 5.432

(3) 54.32

(4) 543.2

11. 4 km 50 m is equal to how many metres ?

(1) 450

(2) 4050

(3) 4005

(4) 45

12. Shubham dug a pit of 7 m 95 cm along a road, and Ramesh dug 9 m 7 cm pit after it. Then what will be the length of the pit dug?

(1) 17.65 m

(2) 17.650 m

(3) 17.02 m

(4) 17.20 m

1.111
795
907

13. 9 Hrs 41 Min = ? Minutes

(1) 581

(2) 571

(3) 941

(4) 131

14. $15 - 7 + 3 \times 6 \div 2 = \dots\dots? \dots\dots$

~~(1)~~ 17

(2) 15

~~(3)~~ 13

(4) 18

15. What is the sum of the greatest and the smallest factors of 15 ?

(1) 15

(2) 16

(3) 18

(4) 8

~~16~~ $145 \times 17 = \dots\dots? \dots\dots$

(1) 3345

(2) 2445

(3) 2465

(4) 2475

17. $810 - 519 = \dots\dots? \dots\dots$

(1) 291

(2) 301

(3) 309

(4) 391

18. How much will you subtract from the greatest 3-digit number to get an answer as 900 ?

(1) 9

(2) 100

(3) 90

(4) 99

19. How many days are there in 6 weeks ?

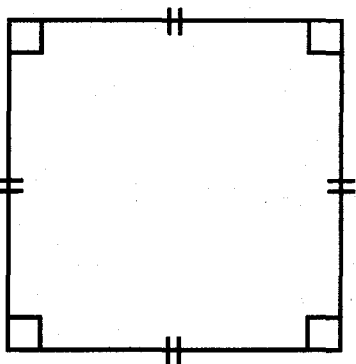
(1) 42

(2) 36

(3) 48

(4) 60

20.



To call the figure given above a square, which of the following reasons would be most appropriate ?

(1) All sides are equal

(2) Every angle is a right angle

(3) All angles are equal

(4) All sides are equal and every angle is a right angle

21. $6544 + 2666 = \dots\dots? \dots\dots$

(1) 9100

(2) 9210

(3) 9200

(4) 9110

22. How much rice will be distributed to 45 students, if one student gets 150 grams of rice ?

(1) 6750 kg

(2) 6.705 kg

(3) 67.500 kg

(4) 6.750 kg

23. Akshaya has Rs. 42.50. In this there are 34 coins of one rupee and the remaining are fifty paise coins. How many fifty paise coins are there ?

(1) 36

(2) 18

(3) 17

(4) 76

24. 1 Hundred \times 8 Tens = How many Tens ?

(1) 80

(2) 8000

(3) 8

(4) 800

25 Which is the correct way of arranging the mixed fraction $\textcircled{\ominus} \frac{\textcircled{\boxtimes}}{\textcircled{*}}$

into an improper fraction from the following ?

(1) $\frac{\textcircled{\ominus} \times \textcircled{\boxtimes} + \textcircled{*}}{\textcircled{*}}$

(2) $\frac{\textcircled{*} \times \textcircled{\boxtimes} + \textcircled{\ominus}}{\textcircled{*}}$

(3) $\frac{\textcircled{\boxtimes} + \textcircled{*} \times \textcircled{\ominus}}{\textcircled{\boxtimes}}$

(4) $\frac{\textcircled{\ominus} \times \textcircled{*} + \textcircled{\boxtimes}}{\textcircled{*}}$

26. If trees are planted at a distance of 2.5 m on both the sides of a road of 25 km, then how many trees will be planted ?

(1) 20000

(2) 20002

(3) 10000

(4) 10001

27. There are rose plants in $\frac{2}{9}$ part of a garden, Chrysanthemum in $\frac{4}{9}$ part and Mogra in the remaining part. How much part of the garden is planted with Mogra ?

(1) $\frac{2}{9}$

(2) $\frac{5}{9}$

(3) $\frac{6}{9}$

(4) $\frac{1}{3}$

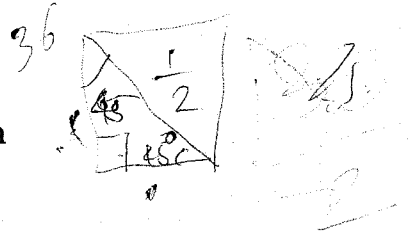
28. The perimeter of an equilateral triangle is 36 cm. If two such equilateral triangles are joined, then what will be the perimeter of the square so formed ?

(1) 4.8 m

(2) 48 cm

(3) 7.2 m

(4) 72 cm



29. Shyam bought a compass box for Rs. 32, a note-book for Rs. 11.25 and 2 pens worth Rs. 5.50 each. When he gave a 100 rupee note to the shopkeeper, how many rupees will the shopkeeper return him ?

(1) 51.25

(2) 54.25

(3) 45.75

(4) 48.75

30. In an example of division sum, if the dividend is 108, divisor 15 and the remainder is 3, then what will be the quotient ?

(1) 18

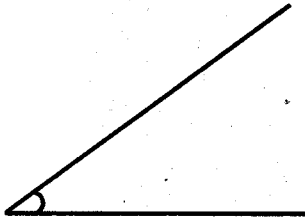
(2) 8

(3) 7

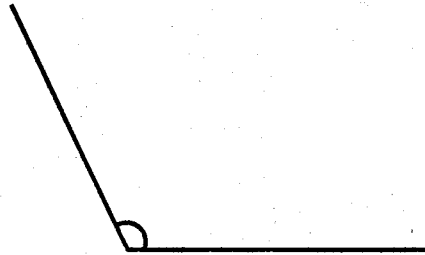
(4) 9

31. Which of the following figures is an obtuse angle ?

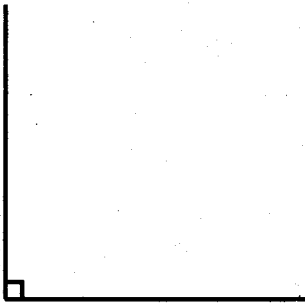
(1)



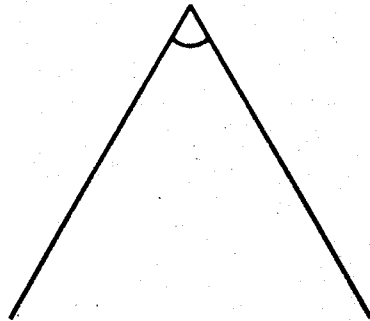
(2)



(3)



(4)



32. What will be the decimal form of the mixed fraction $10\frac{1}{100}$?

(1) 10.100

(2) 10.001

(3) 101.10

(4) 10.01

33. The decimal form of $\frac{8}{16}$ from the following is :

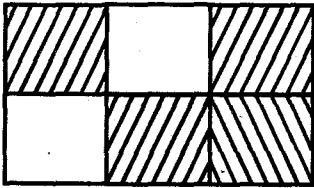
(1) 0.05

(2) 0.025

(3) 0.5

(4) 0.25

34.



Which improper fraction does the coloured part in the figure given above indicate ?

- (1) Six parts upon three (2) Four parts upon six
 (3) Two parts upon four (4) Four parts upon two

35. If $11\frac{4}{7}$, $10\frac{2}{9}$, $8\frac{8}{11}$ and $14\frac{5}{6}$ are converted into improper fraction, then which improper fraction would be the greatest ?

- (1) $11\frac{4}{7}$ (2) $10\frac{2}{9}$
 (3) $8\frac{8}{11}$ (4) $14\frac{5}{6}$

36.

3	11	9
2	6	1

What is the sum of the prime numbers given in the table given above ?

- (1) 24 (2) 26
 (3) 17 (4) 16

37. 392 Sagwan trees, 4117 Babul trees and some Nilgiri trees were planted on Vanamahotsav Day. If 10517 trees were planted in all, then how many Nilgiri trees were planted ?

- (1) 4519 (2) 6008
 (3) 8047 (4) 6018

38. The sum of the ages of Sameer and Raju is 35 years. If Raju is younger than Sameer by 7 years, then what is Sameer's age ?

(1) 28 years

(2) 14 years

(3) 21 years

(4) 17 years

39. 1938 mangoes are filled in 19 boxes. How many mangoes will be filled in 9 such boxes ?

(1) 108

(2) 728

(3) 102

(4) 918

40. Which of the following options is *incorrect* ?

(1) $XV = X + V$

~~(2) $XV = X - V$~~

(3) $XV = XX - V$

(4) $XV = XXV - X$

41. $\frac{11}{23} < \frac{11}{K}$. Which of the following options is *true* ?

(1) $K > 23$

(2) $K > 24$

(3) $K > 25$

(4) $K < 23$

42. $7 * 3 *$ is completely divisible by 3. The digits in the place of * are same. Which digit from the following will be at the * place ?

(1) 2

(2) 3

(3) 1

(4) 5

43. What will be the cost of 37 books, if the cost of one book is Rs. 6 and 75 paise ?

(1) Rs. 249 75 paise

(2) Rs. 2497 75 paise

(3) Rs. 24 75 paise

(4) Rs. 24975

44. The day on 5th June is Monday, what will be the day on 29th June ?

- (1) Monday (2) Wednesday
(3) Thursday (4) Friday

45. The capacity of a bottle is 750 ml. How many bottles will be required to fill 9 litres of medicine ?

- (1) 7 (2) 9
(3) 10 (4) 12

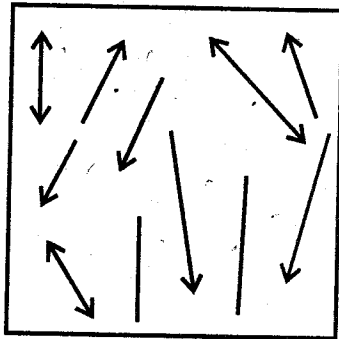
$$\frac{9000}{750}$$

46. What is the lowest form of the improper fraction $\frac{28}{714}$?

- (1) $\frac{1}{3}$ (2) $\frac{4}{51}$
(3) $\frac{2}{51}$ (4) $\frac{22}{71}$

$$\begin{array}{r} 5 - m \\ + 7 \\ \hline 12 - m \\ 19m \\ 26 - m \\ 29 - 1 \\ 28 - 1 \\ 29 - m/h \end{array}$$

47.



How many lines are there in the figure given above ?

- (1) 6 (2) 11
(3) 2 (4) 3

48. From the following, which type of angles does a rectangle have ?

(1) All angles are acute angles

(2) All angles are right angles

(3) All angles are obtuse angles

(4) Two angles are acute angles and two are obtuse angles



49. If all the sides of a triangle are equal, then what is that triangle called ?

(1) Isosceles triangle

(2) Scalene triangle

(3) Right angled triangle

(4) Equilateral triangle

50. If each child collects 49 seeds, then how many seeds will be collected by 346 students of a school ?

(1) 16954

(2) 12845

(3) 18994

(4) 16054